



American Society of Heating, Refrigerating and Air-Conditioning Engineers, Inc.

Dayton Chapter
PO Box 3202 Dayton, OH 45401
<http://www.daytonashrae.org>

Happy New Year! Let's Party!



Enjoy the camaraderie of your fellow ASHRAE members and guests at the Dayton Packard Museum as you explore a part of Dayton's great Automotive heritage.

Friday, January 13

Schedule:

Cocktails 6:00—7:00 (Cash bar, 2 free drink tickets per member)
Dinner: 7:00-8:00
Tour: 8:00—10:00

Cost:

Dayton Members (not students) plus 1 guest: FREE
Guests: \$50 per person
Location: Dayton Packard Museum (see p. 3)
420 S. Ludlow Street

RSVP: By Monday, January 9, 2012 to Jeremy Fauber at
jpfauber@heapy.com or 224-0861

COMING EVENTS:

- ◆ Dayton ASHRAE BOG Meeting — January 19, 2012
8 AM Heapy Engineering
- ◆ ASHRAE Winter Meeting, Chicago, January 21-25, 2012
- ◆ February Lunch Meeting—February 13, 2012 at 11:30 AM

ASHRAE

2011-2012 OFFICERS

President

Steven N. Meier 573-3072
Wat-Kem Mechanical
smeier@watkem.com

President-Elect

Jason Gillespie 313-8843
Point-to-Point Systems
jasondavidgillespie@gmail.com

Treasurer

Kyle Kurtz 264-4343
Waibel Energy Systems
Kyle.kurtz@trane.com

Secretary

Jake Taylor 224-0861
Heapy Engineering
jtaylor@heapy.com

Past President

Rick Pavlak 224-0861
Heapy Engineering
rpavlak@heapy.com

Committee Chairs

Membership

Greg Cohron 513-673-6664
Ramsay-Cohron
gcochro@rcme.com

History

Tom Ferdelman 224-0861
Heapy Engineering
tferdelman@ymail.com

Newsletter Editor

Lorraine Kapka 512-4501
Sinclair Community College
Lorraine.kapka@sinclair.edu

Research Promotion

Dennis Lammlein 886-9178
dlammlein@woh.rr.com

Student Activities

Russell Marcks 512-2053
Sinclair College
Russell.marcks@sinclair.edu

CTTC

Jeremy Fauber 224-0861
Heapy Engineering
jfauber@heapy.com

Webmaster

Russell Marcks 512-2053
Sinclair College
Russell.marcks@sinclair.edu

Board of Governors

Jeremy Fauber 224-0861
Heapy Engineering
jfauber@heapy.com

Greg Cohron 513-673-6664
Ramsay-Cohron
gcochro@rcme.com

Lorraine Kapka 512-4501
Sinclair Community College
Lorraine.Kapka@Sinclair.edu

President's Monthly Brief:



I hope everyone enjoyed the holidays and is ready for what is coming in 2012 (all good things, I hope).


I encourage everyone to check and update their information online with ASHRAE. We will be putting out a roster and would like the most current information. We've noticed a number of members who have changed jobs and haven't changed their email or mailing address. Please take a minute to log in and verify your ASHRAE profile.


We have several scholarship opportunities for anyone studying mechanical engineering or going into a related field! Jarret Kelley was our last year's recipient and we would like to have two this coming year. If you know anyone who would like to apply, please see the information later in this newsletter!

All members are invited to our Holiday Dinner this month at the Packard Museum (see page 1). It should be a great time with old friends and a little bit of Dayton automotive history.

With the ASHRAE Winter Conference on the horizon, you may ask "How can I get involved with technical committees?" Details are on page 6 of this newsletter. Not ready for a national presence? We still have plenty of opportunities at the local level. Join a committee, volunteer to present at a Student ASHRAE meeting, take a presentation out into the schools during Engineer's week—the possibilities are limitless! Just contact any member of the board listed on the left or come to our next board meeting (always the third Thursday of the month at 8 AM at Heapy Engineering). Here's a late Christmas present from me (actually, from SMACNA): New Free App Available! Duct Air Leakage Calculator. Search the Apple iTunes store for "SMACNA".

Happy Holidays from Steve Meier, President, Dayton ASHRAE

	<h1>The Student Zone</h1> <p>Check it out on page 6!</p>
-------------------------------------------------------------------------------------	----------------------------------------------------------

	<h2>Research Promotion Notes:</h2> <p>If you don't see your name on the Honor Roll on page 4, we do not have your ASHRAE Research Contribution yet for this chapter year. Use the form on page 9 to send in your contribution today!</p>
-------------------------------------------------------------------------------------	------------------------------------------------------------------------------------------------------------------------------------------------------------------------------------------------------------------------------------------



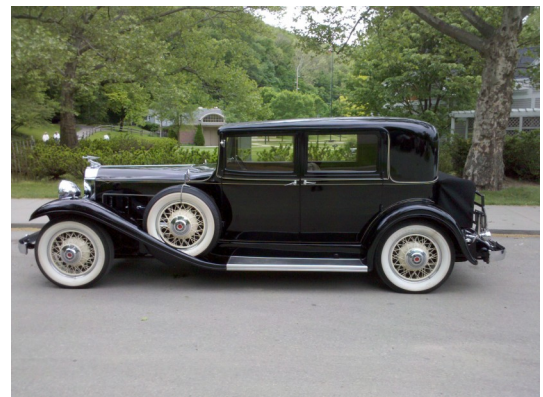
The Story of The Citizens Motorcar Company

The Packard Motor Car Company comes to life again in America's Packard Museum. The museum was founded in 1992 by Dayton attorney and long-time car collector Bob Signom. Located in the original Packard Dealership Building which was built in 1917, the museum has officially taken the name of the original dealership - The Citizens Motorcar Company - but has become known as "America's Packard Museum". The January 1998 edition of Car Collector magazine named the museum one of the "Top Ten" Museums in The United States. In 2004, the Society of Automotive Historians conferred the prestigious James J. Bradley Award upon the Museum for its exemplary efforts in preserving motor vehicle resource materials. Only six other U.S. museums have received the Bradley Award.

Signom brought The Citizens Motorcar Company "back to life," as the only restored Packard dealership operating as a museum. The museum features over 50 automobiles on display in the restored Art Deco showroom, service department and pavillion. In addition, significant artifacts from the Packard Motorcar Company are on display. The museum has become a popular destination for travelers and residents alike. In 1993 the museum was acknowledged by the Montgomery County Historical Society with its Annual Award for restoration of a commercial building. The museum's neighborhood has been named Dayton's Motorcar District.

In 1993 Packard Automobile Classics (The Packard Club) relocated its headquarters from Oakland, California to the Dayton museum. In June, 1996, the Wright Brothers Region of PAC, in Dayton, hosted the Packard National Meet, with multiple events at the Museum, which attracted more than 400 Packard enthusiasts from across the US, Canada, Australia, Switzerland, and the UK. The PAC office is today located in Columbus, Ohio. America's Packard Museum is an Affiliate Organization of The Packard Club.

A Section 501 (c)(3) organization under the Internal Revenue Code whose mission is to educate present and future generations about the Packard Motor Car Company, it's products and philosophies.



Research Promotion Honor Roll 2011-12

Corporations

PLATINUM (\$1000 or more)

GOLD (\$500 or more)

Waibel Energy Systems

SILVER (\$250 or more)

Controlled Air, Inc.

BRONZE (\$150 or more)

Allied Supply Company, Inc.—Dayton

Individuals

HONORS (\$100 or more)

Jeremy Fauber

Tom Ferdelman

Jason Gillespie

Lorraine Kapka

Kyle Kurtz

Dennis Lammlein

Steven Meier

John Patterson

Richard Pavlak

Jake Taylor

DAYTON ASHRAE

Make a New Year's Resolution to Get More Involved with ASHRAE!

Go National!

Applying for Membership on a Technical Committee

ASHRAE welcomes new members to its technical committees.

To be considered for technical committee membership, you must:

- ◆ Notify ASHRAE staff at TCStaff@ashrae.net of your interest in a particular TC, TG, TRG, or MTG.
- ◆ Create or update your ASHRAE biographical record under the “[Manage Your Membership](#)” link from the ASHRAE Web site

◆

Please note:

If you do not have an ASHRAE ID, are or not applying for ASHRAE membership, and are applying for a position that requires an ASHRAE bio to be on file, please [click here](#) to request an ID and PIN. You may also use that link if you already have an ASHRAE ID as a non-member, but you do not have a record of what that number is. You will immediately be assigned as a Provisional Corresponding Member. The acceptance of provisional corresponding membership implies participation in committee activities through correspondence or in-person involvement. Provisional corresponding members serve 2 year terms. Although provisional corresponding members are not voting members, at the end of your term and based on participation in the committee, you may be considered for future voting membership. Notification of acceptance to a TC is emailed upon your appointment.

Stay Local!

See page 7 for local opportunities or contact any Board member (listed on page 2).

The Student Zone

Dayton ASHRAE Announces New Student Membership Program:

ASHRAE Student Membership: CHECK

Dayton ASHRAE Student Membership: Huh?

Dayton ASHRAE currently sponsors student ASHRAE members at local meetings for only \$10 a meeting. Sign up for a Dayton student membership for \$20 and come to the next 4 meetings free (that is a “Black Friday” special price of only \$5 per meeting). Email Lorraine.kapka@sinclair.edu for a student membership form or make reservations for the next meeting and pay the membership fee at the door!

Pay now—save later!

Scholarship Info on Page 13!



Dayton ASHRAE Needs You!

Wanted: Individual to work with current Research Promotion Chair (Dennis Lammlein) with the goal of becoming RP Chair in the future.

Qualifications: Willingness to talk to members about contributing to ASHRAE Research.

Wanted: Webmaster for the Dayton ASHRAE Website to take over from Russ Marcks.

Qualifications: Ability to use web authoring software to update and freshen the website and add new, interactive features desired by members.

Each of these positions requires just a few hours a month. Please contact President Steve Meier (smeier@watkem.com) or any Board Member (see page 2 for directory).



Employers



Have a Job to Fill?

Advertise in your Dayton ASHRAE Newsletter and on the Dayton ASHRAE Website.

Insert a business-card size ad for \$20 a month or \$100 a year.

All proceeds to Dayton ASHRAE Scholarship Fund.

Send ad copy to : Lorraine.Kapka@Sinclair.edu

Dayton ASHRAE Members

Need a Job?

Submit your profile to your Dayton ASHRAE Newsletter.

We'll print it for FREE!

Limited to 250 words plus contact information.

Send ad copy to : Lorraine.Kapka@Sinclair.edu

Volunteers Needed

Ready to Give Back to YOUR Industry?

Dayton ASHRAE needs members to work on committees.

Contact Steve Meier at:
smeier@watkem.com

2011-2012 ASHRAE RESEARCH Dayton ASHRAE

Contribution Form



2010-2011 saw ASHRAE continue its leadership in developing standards and guidance for the design, operation and maintenance of healthy, energy-efficient buildings. The Dayton Chapter again met their goal to raise money for research, setting a new high. Research dollars help fund the science behind the handbooks and standards, making sure that guidance has a solid foundation.

This industry gives all of us our livelihood. ASHRAE's research and educational programs are what keeps our industry and profession on the leading edge and assures its continued existence. Confident that you will recognize the benefits of this investment, I am asking you to help fund future HVAC&R research and development. Together, we can all make a difference!

Amount enclosed: ___ \$250 ___ \$150 ___ \$100 ___ \$50 ___ Other (specify) _____

Name: _____

Address: _____

Phone Number: _____

Member Number (If known): _____

Donation in memory of: _____

Do you want to be recognized in the Dayton newsletter as a contributor? (circle) YES NO

Mail completed form with your check, payable to ASHRAE Research to:

Denny Lammlein
29 Sandelwood Street
Springboro, OH 45066

Invest in the Future:

Support ASHRAE Research!



For Release:
Contact: Jodi Scott, Public Relations
678-539-1140
jscott@ashrae.org

December 14, 2011

New Book Offers Guidance on Implementing Energy Savings Plan

ATLANTA – Guidance on increasing energy efficiency in existing buildings through measuring and tracking efficiency and implementing an efficiency plan is featured in a new book from leading built environment organizations. “Energy Efficiency Guide for Existing Commercial Buildings: Technical Implementation” provides clear and easily understood technical guidance for energy upgrades, retrofits and renovations by which building engineers and managers can achieve at least a 30 percent improvement in energy performance relative to a range of benchmark energy utilization indexes. It features practical means and methods for planning, executing and monitoring an effective program, based on widely available techniques and technologies.

“Energy efficiency improvement in buildings is one of the greatest means to increase resource efficiency, improve environmental stewardship and save operating funds,” George Jackins, who chaired the committee overseeing the book, said. “More importantly, energy efficient improvement should happen because it makes good business sense. Good planning and on-going commitment is essential to maximizing investments in energy efficiency.” Improving energy in an existing building is an iterative process, but first you have to know where you are starting from, according to Jackins. The book recommends some tips on how to begin the energy savings process:

1. Calculate energy use and cost
2. Set energy performance goals
3. Measure and analyze current energy use
4. Select and implement energy efficiency measures
5. Measure and report improvements
6. Continue to track performance and reassess goals

“Energy Efficiency Guide for Existing Commercial Buildings: Technical Implementation” is the second energy efficient guide for existing commercial buildings developed by the same group developing at the Advanced Energy Design Guide series for new buildings – ASHRAE, the American Institute of Architects, the Illuminating Engineering Society of North America and the U.S. Green Building Council and supported by the U.S. Department of Energy. In addition, the Building Owners and Managers Association and the U.S. General Services Administration were involved in its development. The first, “Energy Efficiency Guide for Existing Commercial Buildings: The Business Case for Building Owners and Managers,” provides the rationale for making economic decisions related to improving and sustaining energy efficiency in existing buildings.

The cost of “Energy Efficiency Guide for Existing Commercial Buildings – Technical Implementation” is \$75 (\$64, ASHRAE members). To order, contact ASHRAE Customer Contact Center at 1-800-527-4723 (United States and Canada) or 404-636-8400 (worldwide), fax 404-321-5478, or visit www.ashrae.org/bookstore.

ASHRAE, founded in 1894, is an international organization of some 50,000 persons. ASHRAE fulfills its mission of advancing heating, ventilating, air conditioning and refrigerating to serve humanity and promote a sustainable world through research, standards writing, publishing and continuing education.###

The Official Jobs Board for the American Society of Heating, Refrigerating and Air-Conditioning Engineers

Welcome to ASHRAEJobs.com

Your source for HVACR Engineering Careers

ASHRAE Learning Institute

Seminars & Courses at ASHRAE's Winter Conference in Chicago, IL

2 WAYS TO REGISTER

Internet: www.ashrae.org/lasvegascourses

Phone: Call 1-800-527-4723 (US and Canada) or 404-636-8400 (worldwide)

Full Day Professional Development Seminar

\$485/\$395 ASHRAE Member -- Earn 6 PDHs/AIA LUs or .6 CEUs

The Commissioning Process in New & Existing Buildings

Saturday, Jan 21 – 8:00 a.m. to 3:00 p.m.

Data Center Energy Efficiency

Saturday, Jan 21 – 8:00 a.m. to 3:00 p.m.

Integrated Building Design

Saturday, Jan 21 – 8:00 a.m. to 3:00 p.m.

Using Standard 90.1 to Meet LEED Requirements

Tuesday, Jan 24 – 9:00 a.m. to 4:00 p.m.

Energy Modeling Best Practices and Applications: HVAC/Thermal

Tuesday, Jan 24 – 9:00 a.m. to 4:00 p.m.

Half Day Short Courses

\$159/\$119 ASHRAE Member -- Earn 3 PDHs/AIA LUs or .3 CEUs

Understanding Air-to-Air Energy Recovery Technologies & Applications

Sunday, Jan 22 – 2:00 p.m. to 5:00 p.m.

Understanding & Designing Dedicated Outdoor Air Systems (DOAS)

Sunday, Jan 22 – 2:00 p.m. to 5:00 p.m.

Application of Standard 62.1-2010: Multiple Spaces Equations & Spreadsheet Calculation

Sunday, Jan 22 – 2:00 p.m. to 5:00 p.m.

Basics of High-Performance Building Design

Monday, Jan 23 – 8:30 a.m. to 11:30 a.m.

Complying with Standard 90.1-2010: Envelope/Lighting

Monday, Jan 23 – 8:30 a.m. to 11:30 a.m.

Energy Management in New & Existing Buildings

Monday, Jan 23 – 8:30 a.m. to 11:30 a.m.

Advanced High Performance Building Design

Monday, Jan 23 – 2:30 p.m. to 5:30 p.m.

The Commissioning Process & Guideline 0

Monday, Jan 23 – 2:30 p.m. to 5:30 p.m.

Comply with Standard 90.1-2010: HVAC/Mechanical

Monday, Jan 23 – 2:30 p.m. to 5:30 p.m.

Evaluating the Performance of LEED-Certified Buildings

Monday, Jan 23 – 2:30 p.m. to 5:30 p.m.

Combined Heat & Power

Tuesday, Jan 24 – 9:00 a.m. to 12:00 p.m.

Healthcare Facilities: Best Practice Design

Tuesday, Jan 24 – 9:00 a.m. to 12:00 p.m.

Project Management for Improved IAQ

Tuesday, Jan 24 – 9:00 a.m. to 12:00 p.m.

Healthcare Facilities: Best Practice Applications

Tuesday, Jan 24 – 1:00 p.m. to 4:00 p.m.

Design Toward Net Zero Energy Commercial Buildings

Tuesday, Jan 24 – 1:00 p.m. to 4:00 p.m.



ASHRAE
LEARNING INSTITUTE

ASHRAE HVAC Design Essential Workshop

January 11-13, 2012 • ASHRAE Foundation Learning Center • Atlanta, GA

Obtain the skills needed to:

- Improve overall building performance
- Design high-performance HVAC systems
- Effectively collaborate on an integrated design team

ASHRAE has created the HVAC Design Essentials to provide intensive, practical education for designers and others involved in delivery of HVAC services. Developed by industry-leading professionals, this workshop provides participants with training design to accelerate their evolution into effective member on a design, construction or facilities maintenance team.

In addition to gaining in-depth knowledge and understanding, attendees will receive real-world examples of HVAC systems based on the newly renovated ASHRAE Headquarters building. The workshop teaches a systematic approach to guide a design team to a solution that optimally meets the client's expectations.

Visit www.ashrae.org/hvacdesign to register



Dayton Chapter ASHRAE

<http://www.daytonashrae.org>

Membership Application and Roster Information 2011 - 2012

_____			_____		
Your Name			Your Company Name		
_____			_____		
Home Address			Business Address		
_____	_____	_____	_____	_____	_____
City	State	Zip	City	State	Zip
() -			() -	() -	
_____		_____		_____	
Home Phone		Spouse Name		Business Phone Ext. Fax Number	
_____			_____		
Home e-mail address			Business e-mail address		

SEND NEWSLETTER TO: Home Address Home email address Business Address Business email address

I prefer Lunch Meetings _____ I prefer Dinner Meetings _____ I have no preference _____

Chapter achievements are accomplished through active committee involvement. If you would like to promote your Society by serving as a committee chair or assist on one of the chapter committees, please indicate in which committee you are interested below. Please indicate your first preference by number 1 and so on.

- Education Membership Research Historian Newsletter Chapter Office
 CTTC (Refrigeration; Technical, Energy & Government; Programs) Golf Outing Communication
 Holiday Party Honors & Awards

Please Select Your Preferred Roster Affiliation

Consultant Contractor Industry/Government Retired
 Education Student: School _____ Degree _____ Approximate Graduation Date _____

Wholesalers, Manufacturer's Rep/Sales Offices, Fill in trade names of products you represent below

Air Devices		Louvers and Dampers
Air Handlers		Make-Up Air Units
Boilers		Packaged A/C
Building Automation		Pre-Insulated Pipe
Chillers		Pumps
Coils		Sound Attenuation
Computer Room Equipment		Steam Specialties
Cooling Towers		Air Terminal Units
Ductwork		Thermal Storage
Dust Collection		Unit Heaters
Fans		Unit Ventilators
Fan Coil Units		Vibration Isolators
Filtration		Valves
Heat Exchangers		Variable Speed Drives
Heating Equipment		Water Source Heat Pumps
Humidity Control		Water Treatment
Kitchen, Laboratory Fume Hoods		Other

*Dayton Chapter ASHRAE dues for the Society year beginning July 1, 2011 and ending June 30, 2012 are \$95 per year. Dayton Chapter ASHRAE dues include 6 dinner/lunch meetings, and both you and a guest for the holiday event. * Note: Be sure to begin paying Local dues when you pay your National Dues.*

Please return this application and a check or money order in the amount of \$95 made payable to Dayton ASHRAE to:

DAYTON ASHRAE, PO Box 3202, Dayton, OH. 45401

Paid local dues with your annual dues? Please return the form anyway!

ASHRAE

\$500 SCHOLARSHIPS*



Promoting the Art and Science of Heating and Air Conditioning in the Miami Valley!

Dayton Chapter

Eligibility:

1. Undergraduate or graduate degree candidates enrolled in Engineering, Engineering Technology, Energy Engineering, Facilities Management, Construction Management or similar degree leading to a career in an ASHRAE-related industry.
2. Member of Dayton Chapter of ASHRAE (paying local dues) or their immediate family members, or Student ASHRAE member.
3. Have completed 12 quarter hours or semester hours towards their degree.

Application Requirements:

1. Completed application.
2. College transcript including grades from Fall, 2011 term.
3. Personal recommendation from faculty member in student's program of study.
4. Statement from the student as to why they wish to study an ASHRAE-related discipline.
5. Lists of activities within and outside the University and Industry.

Application Available at
www.daytonashrae.org

Questions? Lorraine.Kapka@Sinclair.edu

Application Must be Postmarked by
January 31, 2012

*Up to two scholarships will be awarded.

December Meeting

TECH SESSION

Steam- powered Condensate Pumps

Mike Sneary,
Kadant Johnson

Sponsored by
Steffens-Shultz



MAIN PROGRAM

Seismic Restraint of Mechanical Systems

James Tauby,
ASHRAE
Distinguished
Lecturer

Region V 2012 Winter Meeting

Regional Dinner

Sunday, January 22 at 7:00 P.M.

(Please arrive at least 15 minutes early)

Park Grill

11 North Michigan Avenue
Chicago, Illinois 60602
(312) 521- Park (7275)
www.parkgrillchicago.com

Overview:

Located in the heart of Chicago's highly acclaimed Millennium Park and on Chicago's famous Michigan Avenue, Park Grill is the city's ultimate room with a view. A true destination restaurant, Park Grill's Contemporary American cuisine and year round entertainment make it an experience unlike any other.

Menu:

Drinks (your choice of the two below):

Iced Tea
Coffee

Other beverages are available at the bar for a fee

Appetizer:

Market House Salad – greens, balsamic onions, cucumbers, cherry tomatoes and radishes with a tomato vinaigrette dressing.

Main Course (your choice):

Grilled Salmon - butternut squash, maitake mushrooms, pumpkin seed pesto
Pork Tenderloin - Sweet potato, brussels sprouts, bacon and apple compote

Dessert:

Apple pie - salted caramel ice cream

Cost is \$55 per person payable by cash or check made out to Richard A. Zbin

Please RSVP Richard A. Zbin at rzbin@tecinc1.com before January 11, 2012.

Please insert Regional Dinner in subject line so I can distinguish it from other emails.

We are limited to 35 people so please RSVP as soon as possible.

April 19, 2012 1:00 PM-4:00 PM EDT

Dedicated Outdoor Air Systems: *A Path to Balancing Energy and IEQ*

Hear leading experts discuss the role of Dedicated Outdoor Air Systems in the overall HVAC system and describe various DOAS equipment configurations, characteristics, and applications. This webcast will identify common design and operational pitfalls, and cover challenges unique to DOAS.



Presenters



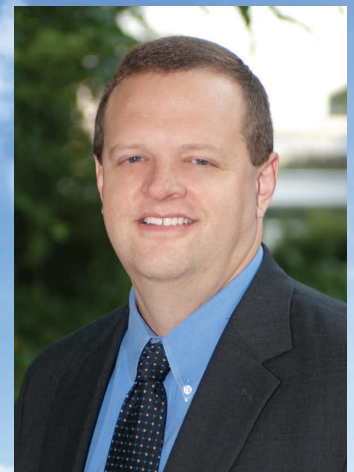
**Ron Jarnigan, 2011-12
ASHRAE President**
Staff scientist | Pacific North-
west National Laboratory |
Richland, WA



Tim McGinn, P.E., LEED AP
Principal | Dialog | Calgary, AB,
Canada



Stan Mumma, Ph.D., P.E.
Professor Emeritus | Pennsylvania
State University | University Park, PA



John Murphy, LEED AP
Applications Engineer | Trane |
La Crosse, WI

How to Participate

- You may register to view the Webcast on your PC
- You may host a webcast viewing site for your colleagues
- View the webcast at a site

PDH Credits

Three (3) Professional Development Hours (PDHs) or three (3) AIA Learning Units may be awarded to viewers who complete the "Participant Reaction Form" by May 3, 2012.

Sponsored by:



Brought to you by the ASHRAE Chapter Technology Transfer Committee

For more information about the program, presenters, continuing education credits, sponsorships, and DOAS resources please visit us at www.ashrae.org/doaswebcast

Join ASHRAE in Chicago!

January
21–25,
2012

Don't miss the chance to participate in ASHRAE's historically best-attended Conference!

Technical Program — join your fellow members and industry leaders to discuss and examine the latest topics in the building industry, such as high performing buildings and integrated design.

Virtual Conference — if you can't make it to Chicago, take advantage of the knowledge shared in the technical program with the Virtual Conference.

AHR Expo — The ASHRAE co-sponsored AHR Expo takes place Jan. 23–25 at McCormick Place. www.ahrexpo.com.

ASHRAE Certification — all six certification programs are being offered: Building Energy Assessment Professional; Building Energy Modeling Professional; Commissioning Process Management Professional; High-Performance Building Design Professional; Healthcare Facility Design Professional; and Operations and Performance Management Professional.

ASHRAE Learning Institute — five Professional Development Seminars and 14 Short Courses are offered, including a new course on the basics of combined heating and power systems and updates to courses covering Standards 62.1 and 90.1 reflect changes in the 2010 versions of these standards.

www.ashrae.org/chicago

